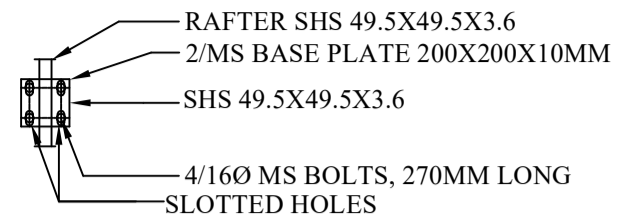
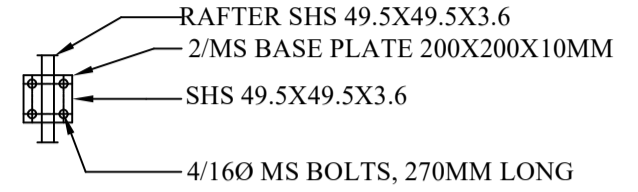


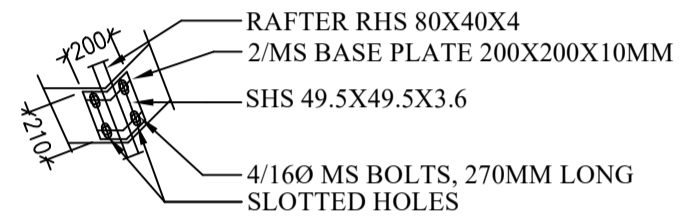
SECTION 'X X'



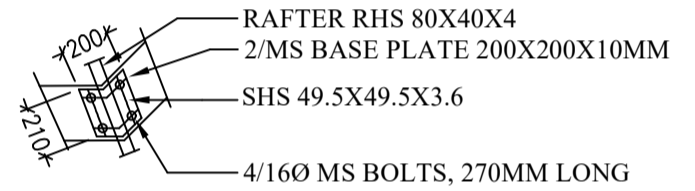
CAP PLATE DETAIL AT FREE END



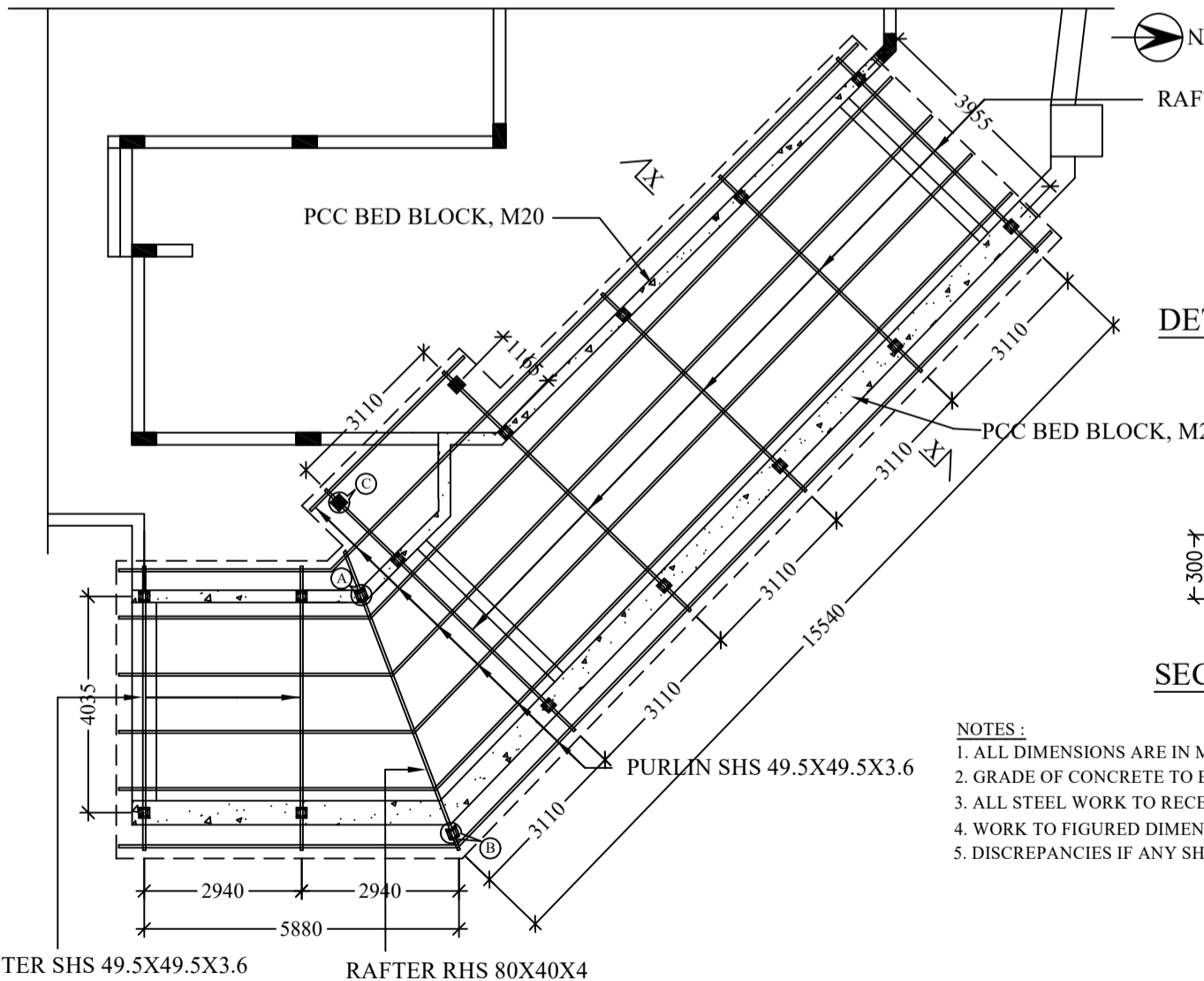
CAP PLATE DETAIL AT FIXED END



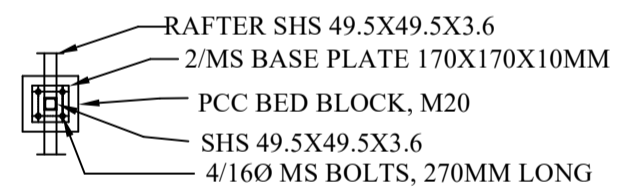
CAP PLATE DETAIL AT 'B' FREE END



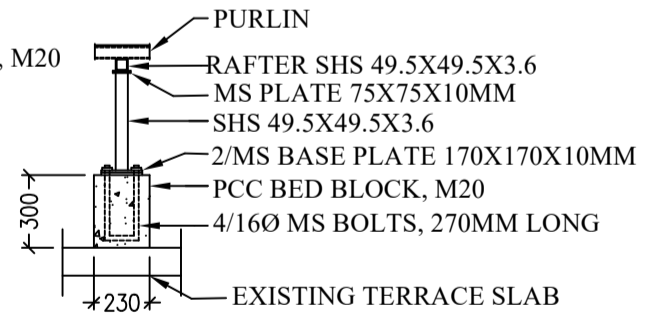
CAP PLATE DETAIL AT 'A' FIXED END



PLAN AT ROOF LEVEL



DETAIL AT 'C'



SECTION AT 'C'

NOTES :

1. ALL DIMENSIONS ARE IN MILLIMETRES UNLESS OTHERWISE STATED.
2. GRADE OF CONCRETE TO BE M20 OR EQUIVALENT NOMINAL VOLUMETRIC MIX OF 1 : 1.66 : 3.33.
3. ALL STEEL WORK TO RECEIVE ONE COAT OF PRIMER BEFORE DISPATCH.
4. WORK TO FIGURED DIMENSIONS, DO NOT SCALE THIS DRAWING.
5. DISCREPANCIES IF ANY SHOULD BE BROUGHT TO THE NOTICE OF THE ENGINEER.

FOR TENDER PURPOSE ONLY

CHRISTIAN MEDICAL COLLEGE -VELLORE.
MODIFICATION TO EXISTING ALUMNI GUEST HOUSE
AT CMC BAGAYAM CAMPUS.
SERVICE YARD LIGHT ROOF DETAIL

DESIGNED: PRABA.S.	CHECKED : NS.	DATE: 01.06.2026
DRAWN: JEYALIN	DWG.NO: CMC/AGH/ST/01	SCALE : NTS.